

PUBLIC PARTICIPATION PLAN

**CORRECTIVE ACTION
STEWARDSHIP PERMIT**

**NEW HIGH SCHOOL PARCEL
379 Bond Street
Bridgeport, CT**

Stewardship Permit DEEP/HWM/CS-015-029

**April 10, 2015
(Revised June 12, 2015)**

Ref. No. 104266R04

Prepared for:

General Electric Company
City of Bridgeport

Prepared by:



TABLE OF CONTENTS

1.0 - INTRODUCTION..... 1

2.0 - DESCRIPTION OF THE FACILITY..... 2

3.0 - DESCRIPTION OF PROPOSED ACTIVITIES..... 3

 3.1 - RCRA Facility Assessment (RFA) 3

 3.2 - RCRA Facility Investigation (RFI) 3

 3.3 - Corrective Measures Study (CMS) 3

 3.4 - Corrective Measures Implementation (CMI) 4

 3.5 - Corrective Actions Completed/ No Further Action..... 4

4.0 - COMMUNITY INFORMATION..... 6

 4.1 - Community Profile..... 6

 4.2 - Potential Community Concerns 7

5.0 - PUBLIC PARTICIPATION ACTIVITIES..... 9

 5.1 - Mailing List..... 9

 5.2 - Information Repository 10

 5.3 - Website 10

 5.4 - Project Contacts 10

 5.5 - Fact Sheets 11

 5.6 - Public Notice..... 12

 5.7 - Public Comment Period 12

 5.8 - Material Modifications..... 13

 5.9 - Annual Updates 13

6.0 - SIGNATURES OF REPORT AUTHORS..... 14

FIGURES

Figure 1 Site Location Map

APPENDICES

Appendix A Facility Mailing List

1.0 - INTRODUCTION

This Public Participation Plan (“PPP”) presents a framework for involving the public, government officials, and other parties who may be interested in the environmental investigation and cleanup of the New High School Parcel property located at 379 Bond Street in Bridgeport, Connecticut (the “Facility”). A Stewardship Permit (the “Permit”) was issued by the Connecticut Department of Energy and Environmental Protection (“DEEP”) on March 11, 2015. The Permit was issued to the current owner of the Facility, General Electric Company (“GE”), and the expected future tenant and owner of the Facility, The City of Bridgeport (the “City”), (collectively the “Permittees”). The Permit requires certain actions by the Permittees that will fulfill the federal Resource Conservation and Recovery Act (“RCRA”) requirement that the environmental condition of the Facility be investigated and that remediation be completed (if needed) to comply with applicable cleanup standards (this RCRA requirement is commonly known as “Corrective Action”). Under RCRA, federal and state agencies encourage public involvement during the Corrective Action process.

This PPP has been developed in accordance with the RCRA Public Participation Manual prepared by the United States Environmental Protection Agency (“USEPA”) and the Permit. Activities described in the PPP are anticipated to be completed by the Permittees under the supervision of, and in coordination with, DEEP.

2.0 - DESCRIPTION OF THE FACILITY

The Facility is owned by GE. The City is planning to construct a High School at the Facility under the terms of a lease. The Facility will ultimately be donated to the City by GE.

The Facility consists of a rectangular 17.16-acre vacant parcel located at 379 Bond Street in Bridgeport, Connecticut (see Figure 1). It is bordered to the east by Bond Street and to the north, west and south by other property owned by GE identified as 1285 Boston Avenue. The Facility historically was part of the 1285 Boston Avenue parcel but in January 2014 was legally divided from the Boston Avenue parcel.

3.0 - DESCRIPTION OF PROPOSED ACTIVITIES

The following sections provide a summary of the phases of investigation and remediation which have been or will be undertaken at the site as part of the Corrective Action process.

3.1 - RCRA Facility Assessment (RFA)

This stage is comprised of a preliminary visual inspection of the site and file reviews. There may be some limited sampling of obvious spill areas. The goal of this assessment is to identify releases or potential releases of hazardous materials that may require further investigation.

The RFA phase has already been completed at the Facility.

3.2 - RCRA Facility Investigation (RFI)

Once it has been determined that there has been or might have been a release of a hazardous substance by the RFA, an RFI is conducted to fully characterize the extent of any release. The goal of this phase is to fully investigate groundwater, soil, sediment, surface water and air contamination that may be present. At the conclusion of this investigation, an investigation report will be developed to identify the contaminants and to help determine if cleanup is necessary. In certain situations, DEEP may require an "interim measure" at a Facility which is determined to have a release which is threatening or may threaten human health or the environment or where sources are easily identified for removal. An interim measure is advantageous to both the Facility and the environment in that the spread of contaminants is limited or eliminated completely which reduces both risk and cost.

The RFI phase at the Facility has been completed.

3.3 - Corrective Measures Study (CMS)

Once an investigation has been completed, and the extent of contamination has been delineated, a CMS will be completed if the concentrations of COCs exceed applicable cleanup standards. In the case of the Facility, the applicable cleanup standards are the Remediation Standard Regulations (RSRs) established by the DEEP (Regulations of Connecticut State Agencies, Section 22a-133k-1 through 3).

In this phase, decisions are made with regard to necessary remedial measures and possible risk factors for humans and the environment. Corrective Measure Studies are designed for use at sites where the development of options for comparison is necessary. The CMS will identify and evaluate the potential remedial options that may be applicable to the site based on several factors including technical, regulatory and public notice and comment considerations. Any option developed must be protective of public health, safety, welfare and the environment.

The CMS studies were completed at the Facility and are contained in the Remedial Action Plan (RAP) that was submitted to the DEEP as part of the Permit application.

3.4 - Corrective Measures Implementation (CMI)

Once the method of cleanup has been agreed upon and established in the RAP, the remedial measures will be implemented. This phase can include removal of contaminants or waste management units, building treatment systems, maintaining the systems, implementing site controls including isolation of soils, and monitoring for their effectiveness. This phase would also include the recording of any deed restrictions or other restrictions on the property, such as the need to limit groundwater withdrawal, soil excavation, and any use restrictions. During this phase, the DEEP generally reviews monitoring documents of the treatment system and/or media monitoring at the site (usually groundwater monitoring results).

The CMI phase of the project is anticipated to be initiated in May 2015.

Substantial progress has already been made toward remedial goals on site in compliance with the RSRs and all other regulatory requirements. Remaining remedial measures will, in addition, be undertaken in accordance with Permit requirements.

3.5 - Corrective Actions Completed/ No Further Action

Once the DEEP has determined that conditions at the site comply with the RSRs and do not present an ongoing risk to human health or the environment, the remedial actions are considered complete. No further treatment or monitoring is necessary. With

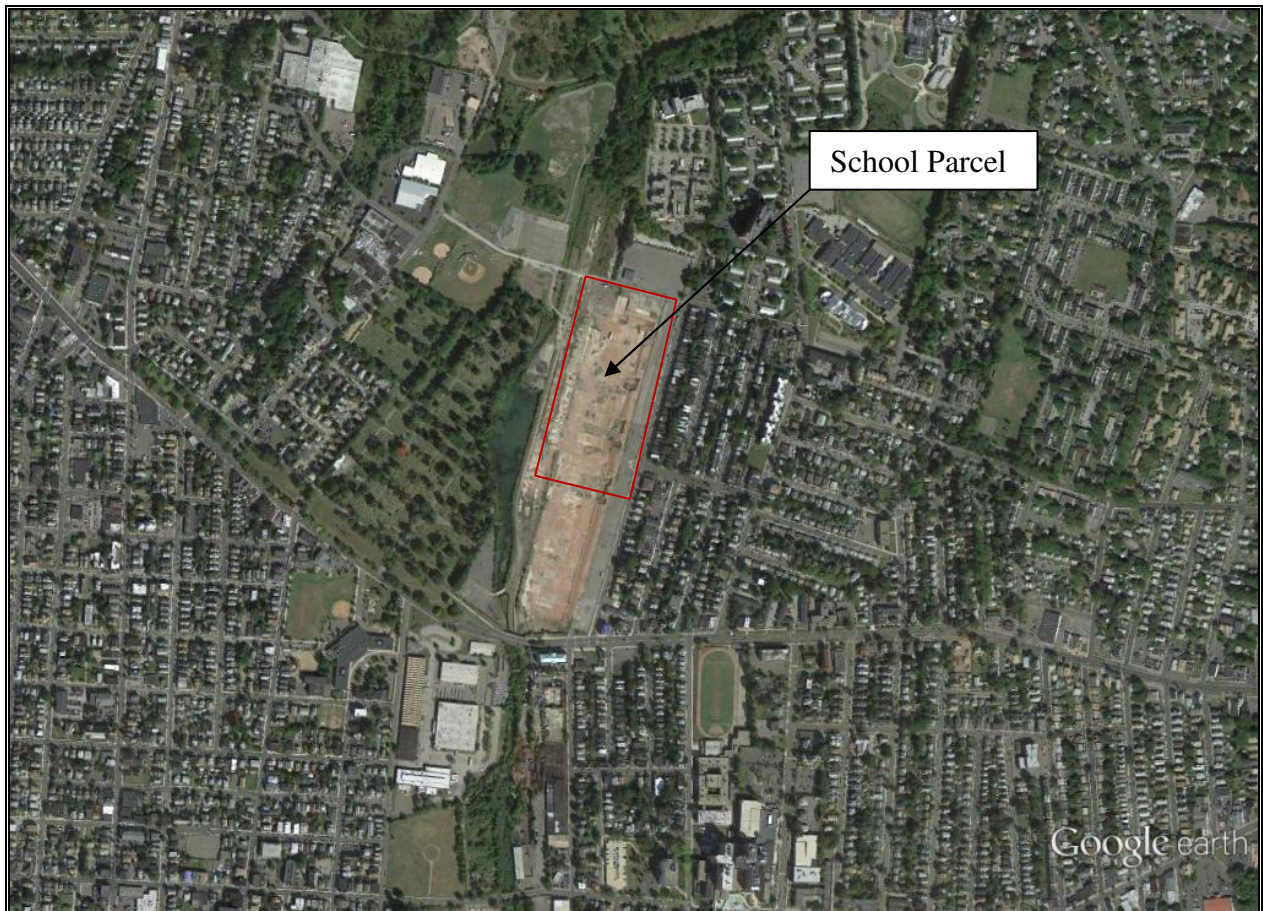
source removal there is confirmation sampling done to ensure that all the contaminants have been removed. With groundwater contaminants, monitoring is required following the source removal to ensure compliance.

4.0 - COMMUNITY INFORMATION

4.1 - Community Profile

Bridgeport is the most populous city in Connecticut. Located in Fairfield County on the Pequonnock River and Long Island Sound, the city had an estimated population of 144,229 at the 2010 United States Census and is the core of the Greater Bridgeport area. It is the fifth-largest city in New England (behind Boston, Worcester, Providence and Springfield.) Bridgeport is the center of the 48th-largest urban area in the United States, just behind Hartford (47th).

New High School Parcel – Aerial Image



The site is located in the eastern portion of Bridgeport within the Mill Hill Neighborhood Revitalization Zone (NRZ). The immediate vicinity of the site is surrounded by additional industrial/commercial properties as well as some residences (see image above).

4.2 - Potential Community Concerns

The following concerns are those typically communicated by the public for sites undergoing environmental actions. Note that extensive community outreach has already been conducted regarding the facility and the planned school construction, including several public informational sessions and formal opportunities to submit comments. Community concerns expressed during the outreach sessions are included in the following list of community concerns:

- *Health and Safety* – Worker and community health and safety are often key concerns at sites undergoing environmental actions. To demonstrate their commitment to the health and safety of workers and neighbors, the Permittees will implement necessary project controls (fencing, signs, security, dust suppression, traffic control, etc.) during all project activities. Note that the Facility is already a heavily managed Facility with restricted access that has been established at this location for decades.
- *School Environment and Safety*- The ultimate safety and suitability of the Facility as a public high school and the safety and well-being of the school community was identified as a major concern of the community. Assurances that the remediation to be undertaken will be under direct DEEP supervision and will be protective of human health and the environment, including a school environment, have been provided to the community. Information provided regarding remedial activities will continue to address this specific concern.
- *Project Schedules* – The timing of project activities at active sites is typically a concern to surrounding neighborhoods. To address this potential concern, the Permittees will make every effort to ensure that work is appropriately scheduled to minimize or even eliminate disruption of normal community activities. The Permittees will also regularly inform the public of project schedules through community updates such as fact sheets.
- *Quality of Life Aspects* – Often communities can have concerns regarding potential quality of life impacts resulting from work at the site (such as increase in traffic, noise from operating equipment, etc.). To address this potential issue

during work at the site, the Permittees will take steps to minimize noise and disruptions to traffic flow and review other quality of life concerns that may arise.

- *Time and Access to the Process* – Additional issues that typically arise at RCRA sites are the amount of time that an investigation and cleanup program takes, and the level of accessibility that the public is afforded to be involved in the process. RCRA Corrective Actions are complex and it can take substantial time to bring a site to closure. This plan encourages participation by all interested community members to help achieve this goal. The Permittees will engage the community as site activities move forward, by providing a project contact for the community for any questions and comments, holding public comment periods, and preparing fact sheets and routine status updates, among other items.

5.0 - PUBLIC PARTICIPATION ACTIVITIES

The overall goal of the Public Participation Plan (PPP) for the site is to facilitate communication and interaction among interested members of the local community, the DEEP, the Permittees, and others during site investigation and Corrective Action activities. To accomplish this goal, several objectives will be pursued through implementation of the PPP:

- Disseminate information regarding the status of the environmental investigation activities and Corrective Actions conducted by or on behalf of the Permittees.
- Designate convenient and centralized points of contact for citizens and other interested parties to communicate with project contacts.
- Provide opportunities for the public input, public comment, and other interaction among interested parties.
- Maintain the information repository, allowing for convenient public access to site-related information, reports, and other records.

It is anticipated that residents, property and business owners in the vicinity of the site, families with children that will attend the new school, and anticipated school staff members will gain the most benefit from the activities outlined in this PPP. However, the public involvement efforts conducted under this plan are also designed to include a larger group of individuals and organizations that may have interest in the site.

To meet the goals and objectives of this plan, as well as to comply with guidance set forth under RCRA, several public outreach and participation activities are required. Brief descriptions of the required and recommended public involvement activities are provided below.

5.1 - Mailing List

To facilitate communication, public involvement, and dissemination of information, the Permittees will maintain a mailing list for use in distributing fact sheets, notices, and other site information, as appropriate. The Permittees will also add to this mailing list as requests for inclusion are received from interested parties. The mailing list will include the City's Chief Elected Official, Superintendent of Schools, the Directors of the City's Environmental Health and Health and Social Services Departments, the Neighborhood

Revitalization Zones (NRZs) in the area, the Principal of Harding High School, and abutting property owners, as well as people who make inquiries regarding this site to the Permittees or the DEEP. Interested individuals or organizations may be added or removed from the mailing list by contacting the project managers listed below. The current Facility mailing list is provided in Appendix A.

5.2 - Information Repository

Technical documents and fact sheets related to the Corrective Action tasks will be maintained at the Bridgeport Public Library, Old Mill Green Branch located at 1677-81 East Main Street in Bridgeport. The public hours for the library are:

Monday – 12:00 p.m. to 8:00 p.m.
Tuesday – 10:00 a.m. to 6:00 p.m.
Wednesday – 10:00 a.m. to 6:00 p.m.
Thursday – 12:00 p.m. to 8:00 p.m.
Friday – Closed
Saturday – 9:00 a.m. to 5:00 p.m.
Sunday - Closed

5.3 - Website

The City of Bridgeport has established a website with an internet address of <http://bridgeportschoolconstruction.com>. Key documents and fact sheets regarding Corrective Action at the Facility will be uploaded to the website for easy public access. A link to this website is also available from the City of Bridgeport's main website.

5.4 - Project Contacts

Ms. Amanda Killeen is the DEEP Project Manager for this site, and is responsible for ensuring project activities comply with applicable RCRA regulations. Ms. Killeen can be reached at:

Ms. Amanda Killeen
Bureau of Water Protection and Land Reuse
Remediation Division
Connecticut Department of Energy and Environmental Protection
79 Elm Street
Hartford, CT 06106-1650
Phone: 860.424.3351
Amanda.killeen@ct.gov

Mr. Michael Manolakas is the an environmental professional licensed pursuant to Conn. Gen. Stat. section 22a-133o (“LEP”), employed by Leggette, Brashears & Graham, Inc. (“LBG”). LBG has been retained by GE to perform environmental tasks associated with Corrective Action at the Facility. Mr. Manolakas can be reached at:

Michael Manolakas, LEP, CPG
Senior Vice President
Leggette, Brashears & Graham, Inc.
4 Research Drive, Suite 204
Shelton, CT 06484
Phone: 203.929.8555
mmanolakas@lbgct.com

Mr. J. Carver Glezen is an LEP employed by Triton Environmental, Inc. Mr. Glezen has been retained by the City to perform environmental tasks associated with Corrective Action at the Facility. Mr. Glezen can be reached at:

J. Carver Glezen
Senior Vice President
Triton Environmental, Inc.
385 Church Street
Guilford, CT 06437
Phone: 203.458.7200
cglezen@tritonenvironmental.com

5.5 - Fact Sheets

To keep the public and other interested parties aware of important activities at the site or the availability of technical reports or decision documents, fact sheets will be developed and distributed to the mailing list. The fact sheets will also be uploaded to the website to facilitate access to the public at large. Fact sheets for the site will summarize

essential technical information for a wide audience, be written using clear and non-technical language, distributed as needed by mail or hand delivery, and placed in the information repository. Typically, fact sheets will include announcements about upcoming events (including public comment periods) summaries of current work activities or project status, schedules for upcoming work, and contact information if more details are desired.

5.6 - Public Notice

To take advantage of opportunities for involvement, the public must first be made aware of important site-related developments and events related to the RCRA process. Public notice will be provided prior to the initiation of any proposed remediation and prior to DEEP's final determination that site-wide remediation is complete.

The public notice of proposed remediation will be provided to DEEP ten (10) calendar days prior to the date of publication. Each public notice will provide a forty-five (45) calendar day comment period and will be published in the Connecticut Post newspaper. The public notice prior to final determination of site-wide remediation will also be broadcast on a radio station during the high volume listening times on the same day it is published and will include a summary of the basis for DEEP's determination.

In addition to the newspaper public notice, written notices will be made to the Chief Elected Official (Mayor of Bridgeport), the Bridgeport Health Director, and all other individuals on the Facility mailing list. Lastly, a sign (six feet by four feet in size) will be erected and maintained at the site which will include the words "ENVIRONMENTAL CLEAN-UP IN PROGRESS AT THIS SITE. FOR FURTHER INFORMATION CONTACT AMANDA KILLEEN AT 860.424.3351."

5.7 - Public Comment Period

Interested parties will have an opportunity to submit written or verbal comments to the DEEP and the Permittees about certain site-related technical reports and decision documents. To this end and based on RCRA regulations and guidance, public comment periods will be planned to provide the public with the opportunity to submit comments regarding certain documents before they are finalized. Within the RCRA program, not all

documents are subject to a public comment period, but all final and approved documents will be publicly available at the information repository listed above.

When a noticed public comment period has ended, the Permittees will submit a written summary of all comments received and responses made thereto to DEEP within thirty (30) calendar days after the end of the comment period.

5.8 - Material Modifications

In the event of proposed material modifications in the remedial or post remedial approaches to Corrective Action at the Facility, DEEP may require an additional opportunity for public comment with respect to such changes.

5.9 - Annual Updates

In addition to the public involvement activities listed above, the permittees will prepare annual written update letters regarding the status of the RCRA Corrective Action at the site and areas affected by the site. The updates will be provided to DEEP and the mailing list outlined above.

5.10 - Public Informational Meetings

Public informational meetings will be held prior to the start of the school construction and prior to the DEEP's final determination that site-wide remediation is complete. The place and time of the public informational meetings will be distributed to the facility mailing list.

5.11 - Schedule for Public Notices

In accordance with the Stewardship Permit, public notices will be provided:

1. Prior to the initiation of remedial actions. This was completed on March 30, 2015; and
2. Prior to the DEEP's final determination that site-wide remediation is complete. Upon completion of the public comment period, the Commissioner will make a final determination. If the final determination is that remediation is complete, then the Stewardship Permit will be terminated and a certification of completion will be issued.

6.0 - SIGNATURES OF REPORT AUTHORS

This report has been prepared by Triton Environmental, Inc. The person listed below is the principal author of this report. Requests for information regarding the content of this report should be directed to this individual.



*J. Carver Glezen, LEP
Senior Vice President*

Appendix A
Facility Mailing List

Facility Mailing List
Corrective Action Stewardship Permit
School Parcel – 379 Bond Street, Bridgeport, CT

Last Revision Date: June 12, 2015

City of Bridgeport Officials	
Mayor Bill Finch Office of the Mayor City of Bridgeport Margaret E. Morton Government Center 999 Broad Street Bridgeport, CT 06604	Kristin duBay Horton Director of Health & Social Services City of Bridgeport 999 Broad Street Bridgeport, CT 06604
Brian Rooney Fire Chief Fire Department 30 Congress St, 3rd Floor Bridgeport, CT 06604	Joseph L. Gaudett Jr. Police Chief Bridgeport Police Department 300 Congress Street Bridgeport, CT 06604
Scott T. Appleby, Director Office of Emergency Management & Homeland Security 581 North Washington Avenue Bridgeport, CT 06604	Frances Rabinowitz, Interim Superintendent Bridgeport Board of Education 45 Lyon Terrace Bridgeport, CT 06604
Warren Blunt, Director Environmental Health Department 999 Broad Street, 1st Floor Bridgeport, CT 06604	
Neighborhood Revitalization Zones (NRZs)	
Deborah Thomas-Sims, Director Office of Neighborhood Revitalization Margaret E. Morton Government Center 999 Broad Street Bridgeport, CT 06604	NRZ Citywide Leadership 45 Lyon Terrace Bridgeport, CT 06604
East End NRZ Ralphola Taylor Center 790 Central Avenue Bridgeport, CT 06607	East Side NRZ Optimums Health Center 982 East Main Street Bridgeport, CT 06604
Mill Hill NRZ Summerfield United Methodist Church 210 Clermont Avenue Bridgeport, CT 06604	

Facility Mailing List
Corrective Action Stewardship Permit
School Parcel – 379 Bond Street, Bridgeport, CT

State Representative/Senator	
Representative Andre Baker Legislative Office Building Room 5008 Hartford, CT 06106-1591	Senator Edwin Gomes Legislative Office Building Room 3800 Hartford, CT 06106-1591
Harding High School Representative	
Carmen McPherson-Varner Principal Harding High School 1734 Central Avenue Bridgeport, CT 06610	
Additional Surrounding Property Owners/Occupants	
See List on Following Page	
Additional Interested Parties Requesting to be Added to Mailing List	
Martha Judd Community and Government Relations Yale New Haven Health System 789 Howard Avenue New Haven, CT 06519	

Facility Mailing List
Corrective Action Stewardship Permit
School Parcel – 379 Bond Street, Bridgeport, CT

ABUTTING PROPERTY	GIS ID	OWNER	MAILING ADDRESS	CITY
32-42 BOND STREET	1905-17	FAITH OUTREACH APOSTOLIC CHURCH	130 PEARL HARBOR ST	BRIDGEPORT, CT 06610
54 BOND STREET	1905-16A	ELLEBA FRANK & GLORIA ELLEBA	54 BOND STREET	BRIDGEPORT, CT 06610
56 BOND STREET	1905-16B	MIRANDA WILLIAM & LUCILA	56 BOND STREET	BRIDGEPORT, CT 06610
88 BOND STREET	1905-15	ANDERSON FABIAN	162 HORACE STREET	BRIDGEPORT, CT 06610
78 BOND STREET	1905-14B	ORTIZ CARLOS R & MARIA C ORTIZ	78 BOND STREET	BRIDGEPORT, CT 06610
74 BOND STREET	1905-14A	CAPOZZI SHEILA	74 BOND STREET	BRIDGEPORT, CT 06610
84 BOND STREET	1905-13	SCOTT JANIE	265 QUARRY STREET	BRIDGEPORT, CT 06610
96 BOND STREET	1905-12	BUTTERFIELD DORIS M	46 BENSON TER	BRIDGEPORT, CT 06606
110 BOND STREET	1905-11	ROGERS CYNTHIA E	110 BOND STREET	BRIDGEPORT, CT 06610
118 BOND STREET	1905-10	GOMEZ GUSTAVO F & MONSERRATE	118 BOND STREET	BRIDGEPORT, CT 06610
128 BOND STREET	1905-9	DESPEIGNES EMMANUELA	240 HARDING AVENUE	STRATFORD, CT 06615
136 BOND STREET	1905-8	GANTT RAYME L	136 BOND STREET	BRIDGEPORT, CT 06610
144 BOND STREET	1905-7	GOMES GUIDO	22 SUMMIT ST	DANBURY, CT 06810
148 BOND STREET	1905-6	ROMAN SARA	148 BOND STREET	BRIDGEPORT, CT 06610
154 BOND STREET	1905-5	BAEZ RODOLFO A	154 BOND STREET #156	BRIDGEPORT, CT 06610
166 BOND STREET	1905-4	FRANCO HERMAN	538 UNION AVE	BRIDGEPORT, CT 06607
170 BOND STREET	1905-3	COLON JOSE L	170 BOND STREET	BRIDGEPORT, CT 06610
198 BOND STREET	1905-1K	HOUSING AUTHORITY CITY OF BPT	376 EAST WASHINGTON AVE	BRIDGEPORT, CT 06608
236 BOND STREET	1906-21	NORMAN-ROSEDAM KIMBERLY	236 BOND STREET	BRIDGEPORT, CT 06610
246 BOND STREET	1906-20	BYFIELD BJORN & AUGUSTA	246 BOND ST	BRIDGEPORT, CT 06607
250 BOND STREET	1906-20A	ALEXANDER ERICA P	250 BOND ST	BRIDGEPORT, CT 06610
256 BOND STREET	1906-19A	BERNSTEIN JAC	17 LUKE CT	STATEN ISLAND, NY 10306
260 BOND STREET	1906-19B	RIVERA REWELL ET AL	260 BOND STREET	BRIDGEPORT, CT 06610
266 BOND STREET	1906-18A	DAVIS CARL R & VICKY DAVIS	1410 AVENUE S N/A	BROOKLYN, NY 06606

Facility Mailing List
Corrective Action Stewardship Permit
School Parcel – 379 Bond Street, Bridgeport, CT

ABUTTING PROPERTY	GIS ID	OWNER	MAILING ADDRESS	CITY
270 BOND STREET	1906-18	PHINN-SPENCER LURLINE & ALBERT	272 BOND ST	BRIDGEPORT, CT 06610
276 BOND STREET	1906-17/17A	SHABAZZ DACCA	151-89 135T AVE	JAMAICA, NY 11434
286 BOND STREET	1906-16	CHEN DONG JIE	106 WEST 113TH ST	NEW YORKNY 10026
290 BOND STREET	1906-16A	GONZALEZ ANGEL & ANNA GONZALEZ	292 BOND ST	BRIDGEPORT, CT 06610
296 BOND STREET	1906-15	XMAS JOE B	296 BOND ST	BRIDGEPORT, CT 06610
302 BOND STREET	1906-15A	MARTINEZ CECILIA	302 BOND STREET	BRIDGEPORT, CT 06610
306 BOND STREET	1906-14B	THOMAS PAMELA F	306 BOND ST	BRIDGEPORT, CT 06610
310 BOND STREET	1906-14A	THOMPSON TYRONE	227-22 113TH AVE	QUEENS VILLAGE, NY 11429
316 BOND STREET	1906-13	ALEXANDER YVETTE ETAL	3877 WOODY HILL DRIVE	LITHONIA, GA 30038
326 BOND STREET	1906-12A	OKEZIE GLORY K	326 BOND STREET	BRIDGEPORT, CT 06610
332 BOND STREET	1906-12B	BRISSETT JACQUELINE	40 PLATT PL	BRIDGEPORT, CT 06610
336 BOND STREET	1906-11A	THOMAS FREDDIE	338 BOND ST	BRIDGEPORT, CT 06610
340 BOND STREET	1906-11	NORTH END LLC	15 HIGHWOOD PL	TRUMBULL, CT 06611
346 BOND STREET	1906-10	SAMUELS LENWORTH &	522 EAST 43RD ST	BROOKLYN, NY 11203
350 BOND STREET	1906-10A	BUSH FRANCISCO	80 CARTRIGHT STREET 4K	BRIDGEPORT, CT 06610
356 BOND STREET	1906-9	TYRONE THOMPSON	356 BOND STREET	BRIDGEPORT, CT 06610
366 BOND STREET	1906-8	DIMITROGLOU DIMITRIOS	12 CLOVERLY CIR	NORWALK, CT 06850
376 BOND STREET	1906-7A	CRICHLow NEIL	376 BOND STREET	BRIDGEPORT, CT 06610
382 BOND STREET	1906-7	CRICHLow NEIL	380 BOND STREET	BRIDGEPORT, CT 06604
386 BOND STREET	1906-6	95 NEW CANAAN AVENUE LLC	37 WILLIAM STREET	BRIDGEPORT, CT 06851
396 BOND STREET	1906-5	NOYES EVERTON	396 BOND STREET	BRIDGEPORT, CT 06610
406 BOND STREET	1906-4/4A	SEEPERSAUD BHARRAT P	408 BOND ST	BRIDGEPORT, CT 06610
416 BOND STREET	1906-3	MCNICKOL VERNIKA ET AL	420 BOND ST	BRIDGEPORT, CT 06610
420 BOND STREET	1906-2	MCNICKOL VERNIKA ET AL	420 BOND ST	BRIDGEPORT, CT 06610

Facility Mailing List
Corrective Action Stewardship Permit
School Parcel – 379 Bond Street, Bridgeport, CT

ABUTTING PROPERTY	GIS ID	OWNER	MAILING ADDRESS	CITY
426 BOND STREET	1906-1	MORROW MARY P	349 PURDY HILL RD	MONROE, CT 06468
25 STEWART STREET	2044-1X	KENN HOMES INCORPORATED	2440 RESERVOIR AVE	TRUMBULL, CT 06611
480 BOND STREET	2044-1L	GOLDEN HILL FOUNDATION INC	2 TRAP FALLS RD	SHELTON, CT 06484
600 BOND STREET	2044-1M	BRIDGEPORT HEALTH CARE REALTY	600 BOND STREET	BRIDGEPORT, CT 06610
615 ASYLUM STREET	2801-39A	SPORTING GOODS PROPERTIES INC	615 ASYLMUM ST	BRIDGEPORT, CT 06610
575 ASYLUM STREET	2050-30A	PAY DAY INC	323 NORTH AVE	BRIDGEPORT, CT 06608
425 ASYLUM STREET	2050-2	UNGER COGGSWELL PROPERTIES LLC	425 ASYLUM ST	BRIDGEPORT, CT 06610
315 ASYLUM STREET	2022-24B	COGGSWELL – BRIDGEPORT LLC	150 WEST 22 ND STL, 10 TH FL	NEW YORK, NY 10011
305 ASYLUM STREET	2022-23B	FUCCI DONALD R & LINDA V	453 WHITNEYAVE	TRUMBULL, CT 06611
231 ASYLUM STREET	2022-20X	GRIFFITH CO	239 ASYLUM ST	BRIDGEPORT, CT 06610
885 BOSTON AVE	2044-21	LAKEVIEW CEMETERY ASSOCIATION	855 BOSTON AVE	BRIDGEPORT, CT 06610
1100 BOSTON AVE	1725-5B	ADJ REALTY CORPORATION	167 HIGH FARMS RD	GLEN HEAD, NY 11545
1260 BOSTON AVE	1905-1K	HOUSING AUTHORITY CITY OF BPT	376 EAST WASHINGTON AVE	BRIDGEPORT, CT 06608
1290 BOSTON AVE	1805-1A	VANDO PETER CUONG & THUYUN	1290 BOSTON AVE	BRIDGEPORT, CT 06610
1292 BOSTON AVE	1805-32	YANKEE DISCOUNT MUFFLER	1290 BOSTON AVE	BRIDGEPORT, CT 06610
1356 BOSTON AVE	1805-31	MAKHRAZ MOUFID	104 BAROS ST	FAIRFIELD, CT 06824
1313 BOSTON AVE	1805-38	ELI INDUSTRIES LLC	33 STILSON RD	FAIRFIELD, CT 06825